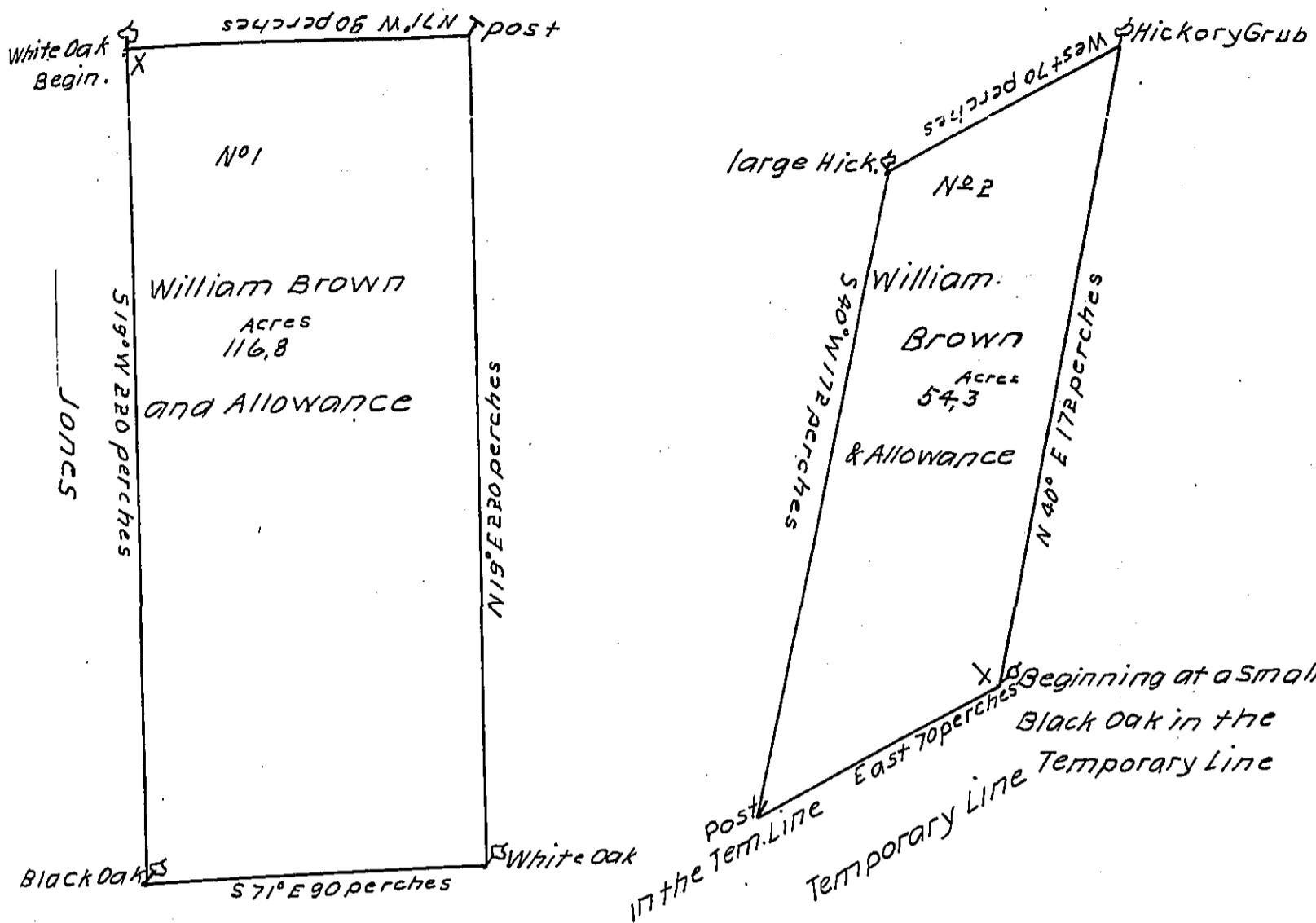


FORM NO. 1.

JOHN DAVIS



Draughts of two Tracts of Land situate at Antietam in the County of Cumberland (late part of the County of Lancaster) one Containing one Hundred and Sixteen Acres and eight tenth parts of an Acre and the Allowance of Six Acres P. Cent for roads and Highways the Other Containing Fifty Four Acres and three tenth parts of an Acre And the Allowance proportional to Six Acres P. Cent for roads and Highways Surveyed by Thomas Cookson Esquire late Deputy Surveyor of Lancaster County for William Brown the 16th January 1743/4 in pursuance of a Warrant bearing date at Philadelphia the Fourteenth day of April 1743 Protracted from Mr. Cooksons field Book & Calculated

P. Geo. Stevenson one of the
Exec^{ts} of Tho^s Cookson.

To Nicholas Scull Esq^r Surv^r Gen^l

IN TESTIMONY that the above is a copy of the original remaining on file in the Department of Internal Affairs of Pennsylvania, made conformably to an Act of Assembly approved the 16th day of February, 1833, I have hereunto set my Hand and caused the Seal of said Department to be affixed at Harrisburg, this sixteenth day of August, 1911.

Henry Houck
Secretary of Internal Affairs.